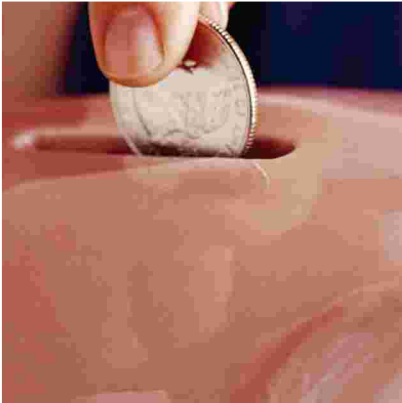
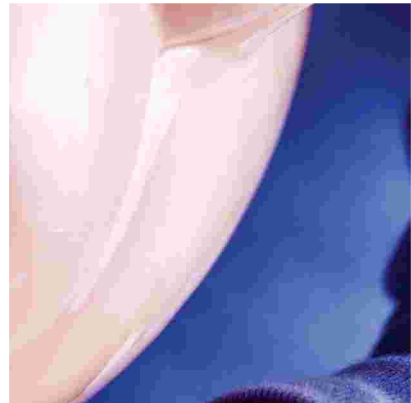
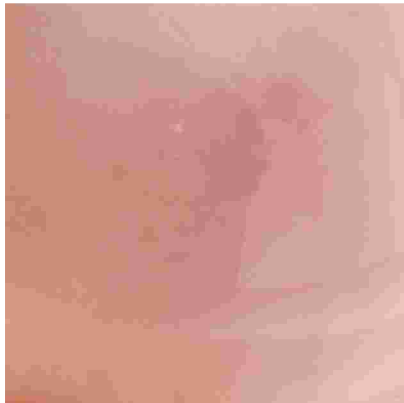
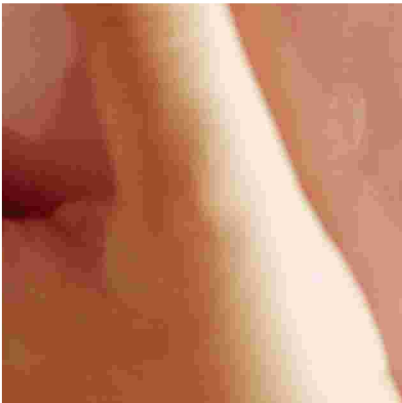
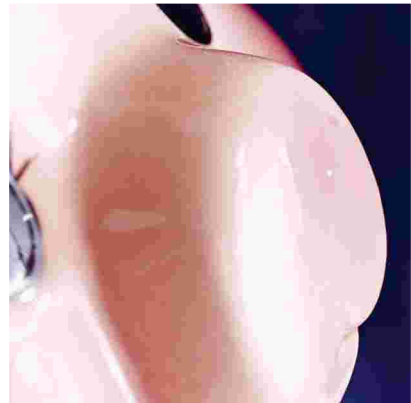



RAID
revenue assurance



Revenue
Assurance
Solution



Enhance your end-to-end Revenue Assurance processes

Industry estimates revenue loss due to poorly managed operations anywhere from 2% to 12% of total revenues. The leakage mostly occurs because of incoherencies and failures in the provisioning and switch-to-bill processes.

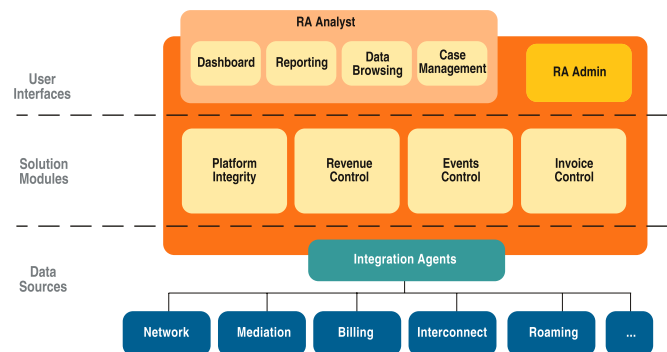
The trend towards data services (messaging, mobile content etc.) becoming increasingly important revenue contributors presents a new challenge for current revenue assurance strategies.

To assure that the services that are provided to customers are actually being billed and collected accurately, Telecom Operators need to implement an effective control system capable of enhancing their end-to-end Revenue Assurance processes and to respond to current and future needs.

RAID - Revenue Assurance Solution

RAID is a proven, easy-to-use and flexible solution to effectively automate, manage and grow your end-to-end Revenue Assurance processes, and provide compliance with regulatory requirements, such as Sarbanes-Oxley.

RAID integrates information from different platforms to a central database, applies business validation and comparison rules to detect errors and inconsistencies, produces and manages alarms, provides the full problem life-cycle management and provides different kinds of KPI's and reports.



Data sources

RAID collects customer and service data from a variety of OSS and BSS making it possible to process large volumes of data in almost any format, including Fixed, Mobile, IP and 3G networks. Using the Integration Agents component it is capable of reading, processing, enriching and loading the data required to perform revenue assurance validations.

Solution Modules

- The **Platform Integrity Module** automatically checks subscriber data consistency across several platforms, such as CRM systems, Pre Paid platforms, Network and Billing, by implementing validation and comparison rules and by producing alarms on the inconsistencies found.
- The **Revenue Control Module** monitors the revenue chain, from the xDR generation at the switching centres and/or service platforms, to its inclusion in the invoices sent to the customers. Signalling or session data can be included in the reconciliation process. It collects aggregated data from several measurement points along the revenue chain, reconciles it using historical, cross-system and threshold validation rules and produces alarms on the inconsistencies found.
- The **Events Control Module** monitors individual events processing, from the xDR generation at the switching centres and/or service platforms, to their inclusion in the invoices sent to customers. This module identifies faults and errors for a set of relevant events individually and measures response times across the revenue chain, thereby determining service levels. It can also be used to provide detailed information and drill-down capabilities when integrated with the Revenue Control Module.
- The **Invoice Control Module** monitors the invoice generation process and the correctness of the billing process. It validates bill cycles, customer trends and invoices. Invoice data may be validated against historical and statistical data or compared against other sources.

Benefits

PROVEN SOLUTION

RAID has been selected and successfully deployed worldwide for several fixed, mobile and cable communications & media providers.

HIGHLY FLEXIBLE PRODUCT

RAID is highly configurable using a Drag & Drop user interface to respond to the specific RA requirements and complex business rules.

EASE TO INTEGRATE AND MAINTAIN

RAID responds to specific revenue assurance requirements being easily configured to handle different network and business support systems. RAID is modular and enables phased implementations, systems and processes changes and the introduction of new services and systems.

INTEGRATED AND CENTRALIZED CONTROL

RAID provides centralized control within one tool in spite of having multiple applications and systems for validating single points. RAID enables multiple validations in each system and between different systems.

BUILT FOR RAPID DEPLOYMENT

Due to product modular approach and architecture RAID can be rapidly deployed.

PERFORMANCE AND SCALABLE

RAID architecture and technology enables its implementation from small to very large operators. It includes state-of-the-art technology developed to collect and process customer and services data ensuring maximum performance and having no impact on the operators' systems. RAID is proven in production to handle more than 1 billion xDRs per day.

Offices

'Pleasure in the job puts perfection in the work' *Aristotle*

Portugal _ Lisbon

Edifício Picoas Plaza
Rua do Viriato, núcleo 6 - 4º andar
1050-233 Lisboa - Portugal
Tel. +351 210 111 400
Fax +351 210 111 401

Brazil _ S. Paulo

Rua Fernão Dias, 210-218,
2º andar, sala 01
São Paulo
CEP: 05427-000 SP - Brazil

Germany _ Düsseldorf

Prinzenpark, Prinzenallee 7
40549 Düsseldorf - Germany
Tel. +49 (0) 211-523 91 482
Fax +49 (0) 211-523 91 200

Portugal _ Braga

Centro Empresarial de Braga
Pavilhão C4
Lugar da Misericórdia - Ferreiros
4700-319 Braga - Portugal
Tel. +351 253 101 400
Fax +351 253 101 401

Spain _ Madrid

Edifício Cuzco IV
Paseo de la Castellana, 141 - 8ª planta
28046 Madrid - Spain
Tel. +34 91 572 6759
Fax +34 91 572 6621

France _ Paris

Paris, La Défense - Egée
9/11, allée de l'Arche
Coubevoie Cedex
France, 92671
Tel. +33 1 70 36 53 86
Fax +33 1 49 97 17 00

Brazil _ Rio Janeiro

Centro Empresarial Mourisco
Praia do Botafogo 501 - 2º Andar
Bloco Corcovado, Rio de Janeiro
CEP 22250-040-RJ - Brasil
Tel. +55 (21) 2586-6043
Fax +55 (21) 2586-6198

UK _ London

90 Long Acre
Covent Garden
London
WC2E 9RZ
Telf. +44 (0) 207 849 3059
Fax +44 (0) 207 849 3200

On the Web

www.wedosoft.com

General Information

customerservices@wedosoft.com